



# Malic enzyme 1 Polyclonal Antibody

<b>Catalog No</b>	YP-Ab-02665
<b>Isotype</b>	IgG
<b>Reactivity</b>	Human;Mouse;Rat
<b>Applications</b>	WB;ELISA
<b>Gene Name</b>	ME1
<b>Protein Name</b>	NADP-dependent malic enzyme
<b>Immunogen</b>	The antiserum was produced against synthesized peptide derived from human ME1. AA range:468-517
<b>Specificity</b>	Malic enzyme 1 Polyclonal Antibody detects endogenous levels of Malic enzyme 1 protein.
<b>Formulation</b>	Liquid in PBS containing 50% glycerol, 0.5% BSA and 0.02% sodium azide.
<b>Source</b>	Polyclonal, Rabbit,IgG
<b>Purification</b>	The antibody was affinity-purified from rabbit antiserum by affinity-chromatography using epitope-specific immunogen.
<b>Dilution</b>	Western Blot: 1/500 - 1/2000. ELISA: 1/40000. Not yet tested in other applications.
<b>Concentration</b>	1 mg/ml
<b>Purity</b>	≥90%
<b>Storage Stability</b>	-20°C/1 year
<b>Synonyms</b>	ME1; NADP-dependent malic enzyme; NADP-ME; Malic enzyme 1
<b>Observed Band</b>	64kD
<b>Cell Pathway</b>	Cytoplasm .
<b>Tissue Specificity</b>	Expressed in all tissues tested including liver, placenta and white adipose tissue.
<b>Function</b>	catalytic activity:(S)-malate + NADP(+) = pyruvate + CO(2) + NADPH.,cofactor:Divalent metal cations. Prefers magnesium or manganese.,online information:The Singapore human mutation and polymorphism database,similarity:Belongs to the malic enzymes family.,subunit:Homotetramer.,tissue specificity:Expressed in all tissues tested including liver, placenta and white adipose tissue.,
<b>Background</b>	This gene encodes a cytosolic, NADP-dependent enzyme that generates NADPH for fatty acid biosynthesis. The activity of this enzyme, the reversible oxidative decarboxylation of malate, links the glycolytic and citric acid cycles. The regulation of expression for this gene is complex. Increased expression can result from elevated levels of thyroid hormones or by higher proportions of carbohydrates in the diet. [provided by RefSeq, Jul 2008],



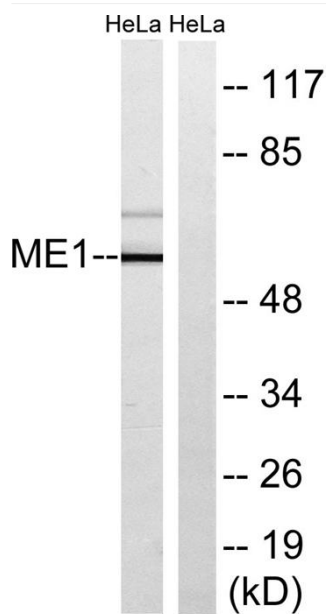
**matters needing attention**

Avoid repeated freezing and thawing!

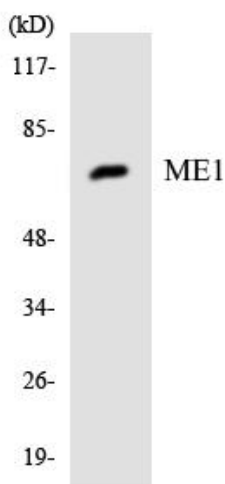
**Usage suggestions**

This product can be used in immunological reaction related experiments. For more information, please consult technical personnel.

## Products Images



Western blot analysis of lysates from HeLa cells, using ME1 Antibody. The lane on the right is blocked with the synthesized peptide.



Western blot analysis of the lysates from HeLa cells using ME1 antibody.